



Salish Sea Guillemot Network – Pigeon Guillemot Breeding Survey

Preliminary Results 2021

(14 October 2021 Data Dump)

Study Sites

- Whidbey Island 2008-2021
- South Puget Sound 2013-2021
- Clallam County 2016-2021
- Vashon Island 2018-2021
- Kitsap County 2020-2021
- Camano Island 2020-2021
- Jefferson County – East (New)

Definitions

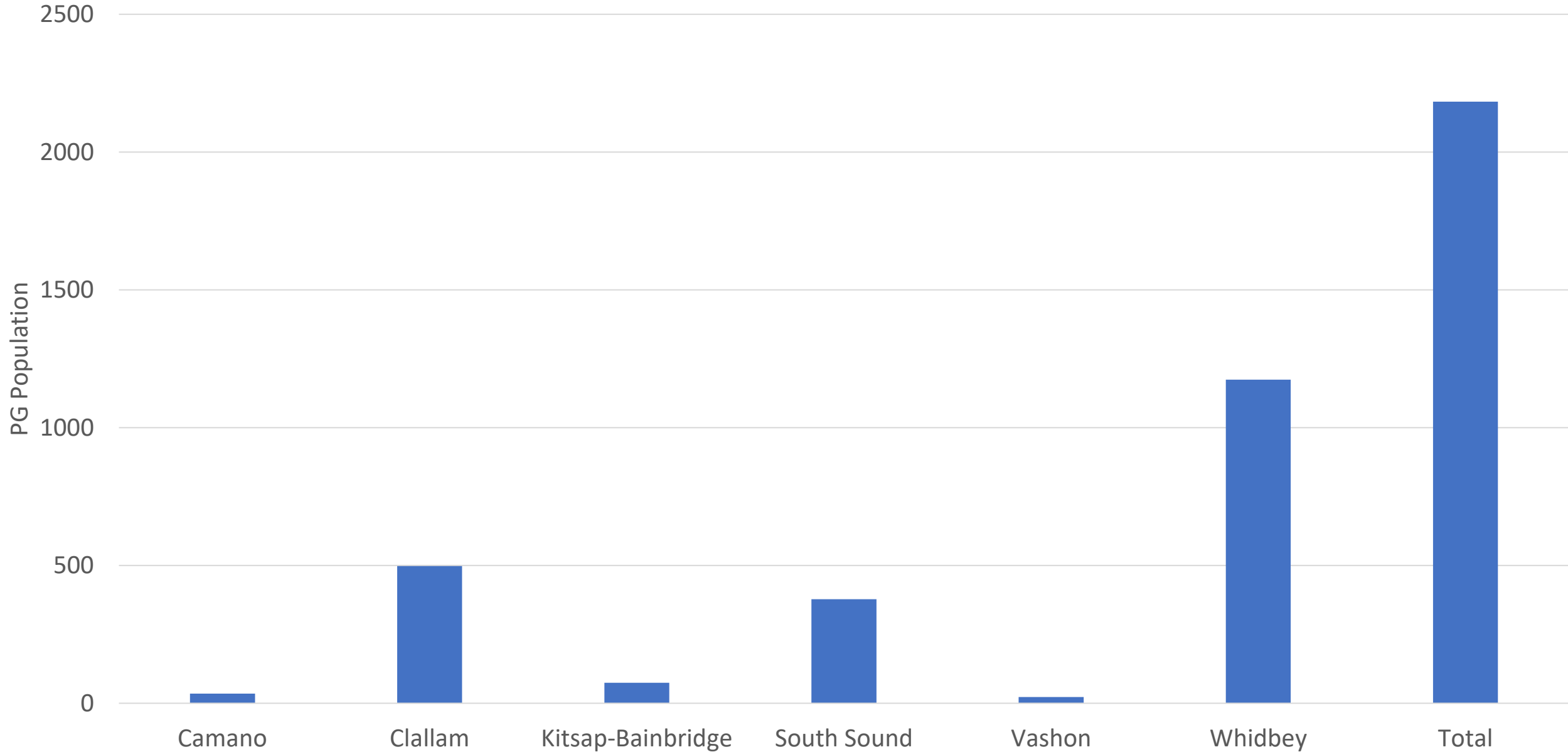
- PG Population for a Region: the sum of the maximum PG counts for each beach/colony over the length of the survey.
- Active Burrow: a burrow for which a PG has been seen entering. This is considered a burrow in which there is an attempt to breed.
- Chick Burrow: a burrow to which a PG has delivered prey. Chick Burrows are a subset of Active Burrows.

2021 Quick Stats

- Regions: 6
- Colonies surveyed: 67
- Surveys performed: 699
- Volunteer hours: 3,671
- PG population: 2,183
- Active burrows: 423
- Chick burrows: 275
- Prey delivered: 1,041

PG Populations per Region

SSGN 2021



Region Statistics - SSGN 2021

	Colonies	Surveys	Volunteer	PG	Active	PGs	% PGs	Chick	Breeding	% PGs
	Surveyed	Performed	Hours	Population	Burrows	Attempting	Attempting	Burrows	PGs ²	Breeding
						to Breed ¹	to Breed			% PGs
										Breeding
Camano	1	13	143	35	14	28	80%	11	22	63%
Clallam	12	140	522	498	70	140	28%	47	94	19%
Kitsap-Bainbridge	7	52	148	75	17	34	45%	13	26	35%
South Sound	16	156	989	378	81	162	80%	54	108	29%
Vashon	3	26	50	23	14	28	122%	7	14	61%
Whidbey	28	312	1819	1174	227	454	39%	143	286	24%
Totals/Averages	67	699	3671	2183	423	846	39%	275	550	25%

¹PGs Attempting to Breed = (2 x Active Burrows)/PG Population

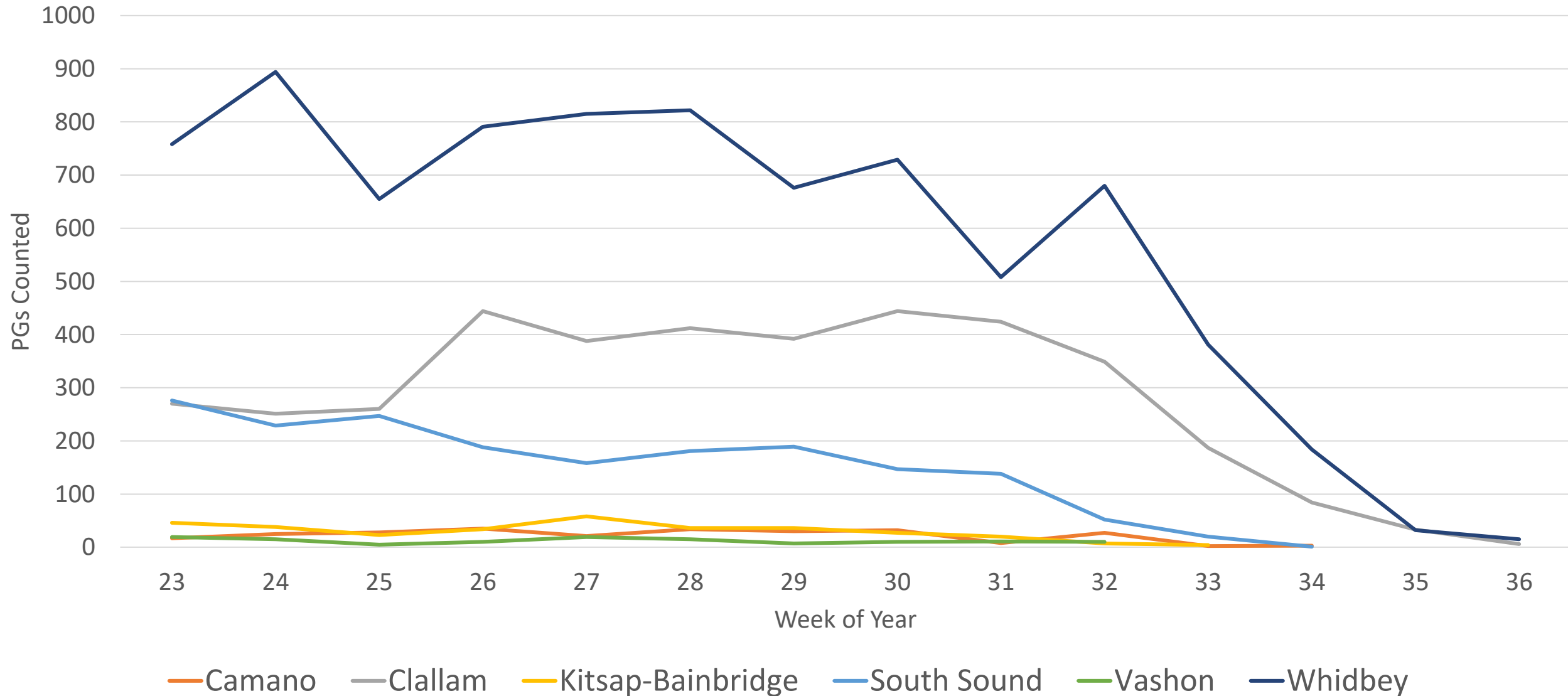
²Breeding PGs = (2 x Chick Burrows)/PG Population

Visits/Deliveries to Burrows										
	Total	Total	No Prey				%	%	%	Deliveries
	Visits to	Prey	Visits	Sculpin	Gunnel	Other	Sculpin	Gunnel	Other	per Chick
	Burrows	Deliveries								Burrow
Camano	41	25	16	1	21	3	4%	84%	12%	2.3
Clallam	385	222	163	33	180	9	15%	81%	4%	4.7
Kitsap-Bainbridge	44	31	13	4	25	2	13%	81%	6%	2.4
South Sound	373	198	175	45	136	17	23%	69%	9%	3.7
Vashon	42	10	32	1	9	0	10%	90%	0%	1.4
Whidbey	1272	555	717	213	281	61	38%	51%	11%	3.9
Totals/Averages	2157	1041	1116	297	652	92	29%	63%	9%	3.8

Observed PGs per Week per Region - SSGN 2021

Week 23 is Jun 7-13

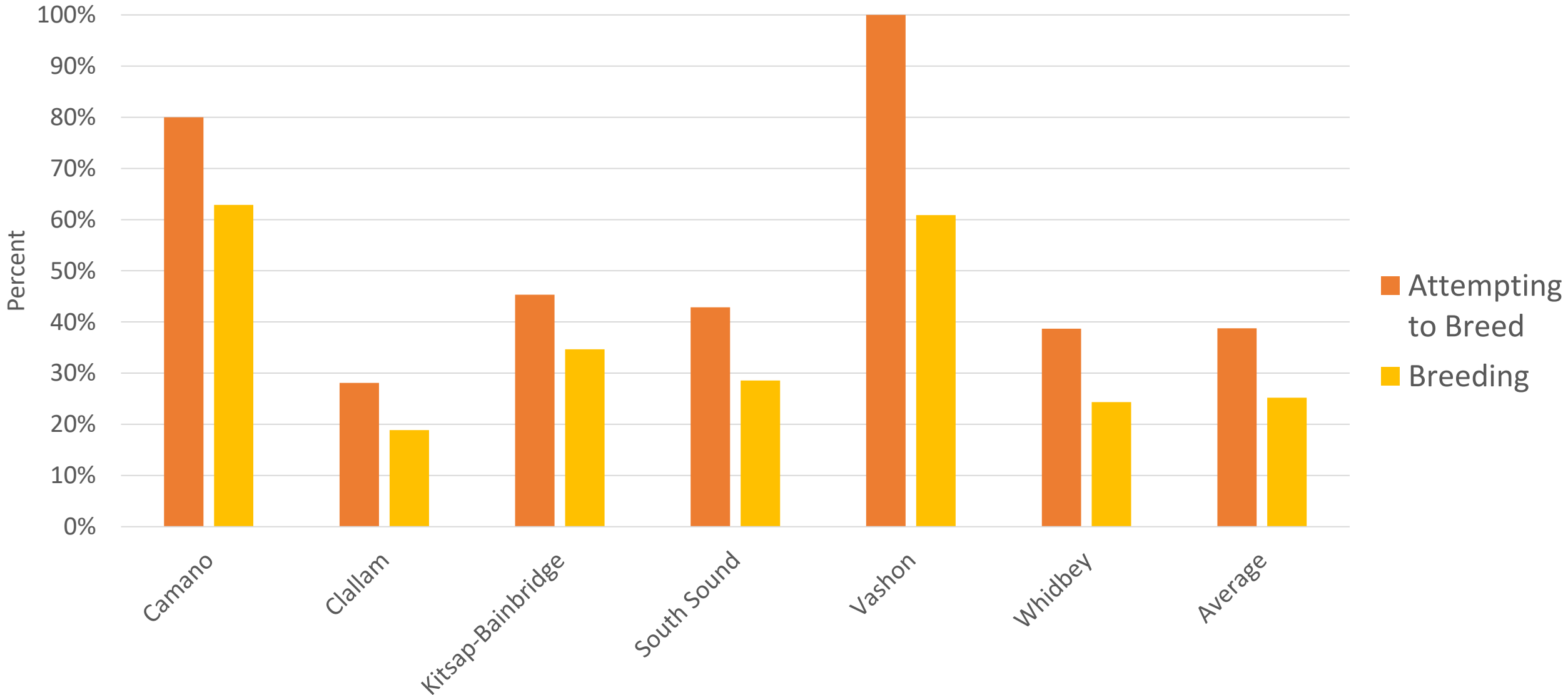
Week 33 is Aug 16-22



PG Population Breeding Percentages - SSGN 2021

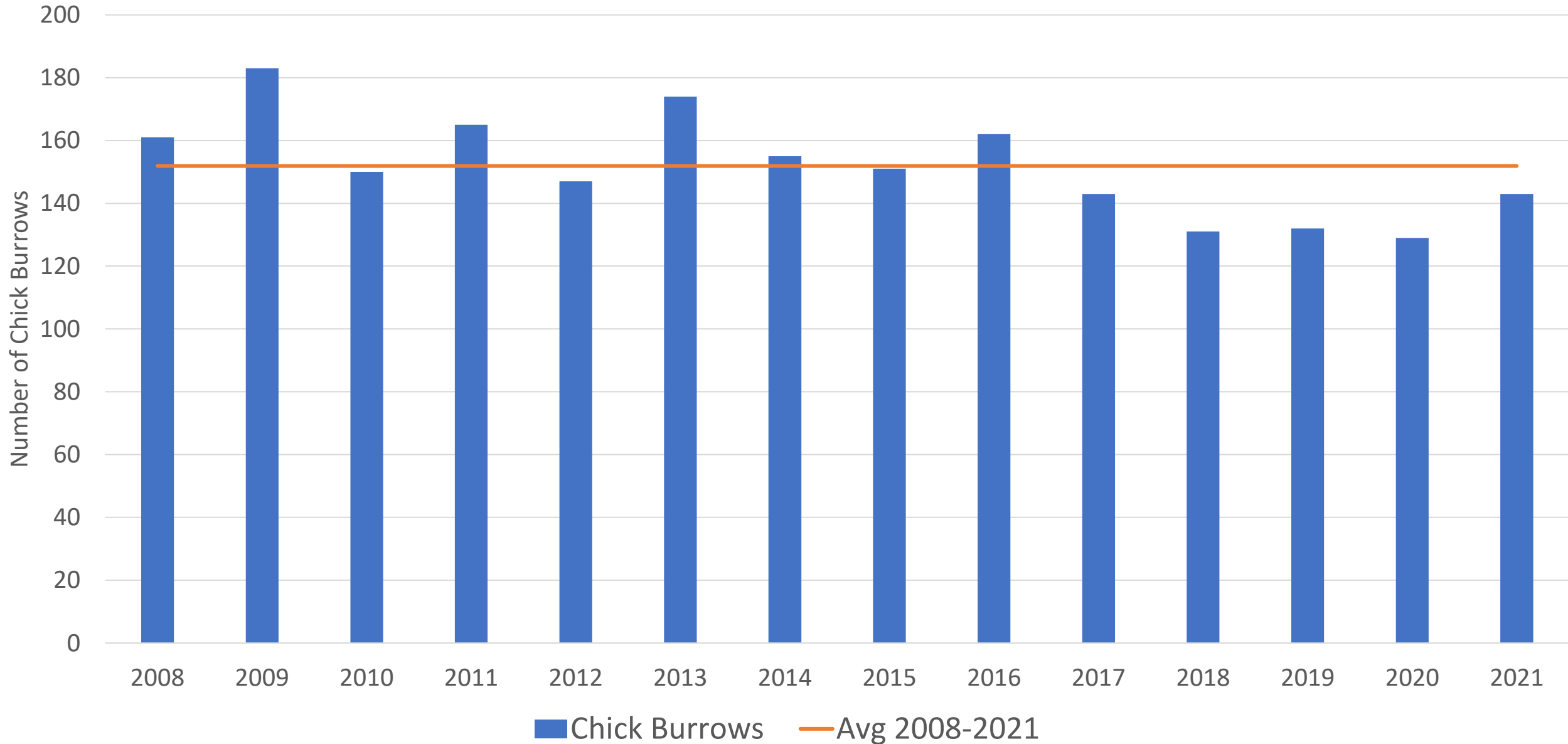
Attempting to Breed = $(2 \times \text{Active Burrows}) / \text{PG Population}$

Breeding = $(2 * \text{Chick Burrows}) / \text{PG Population}$



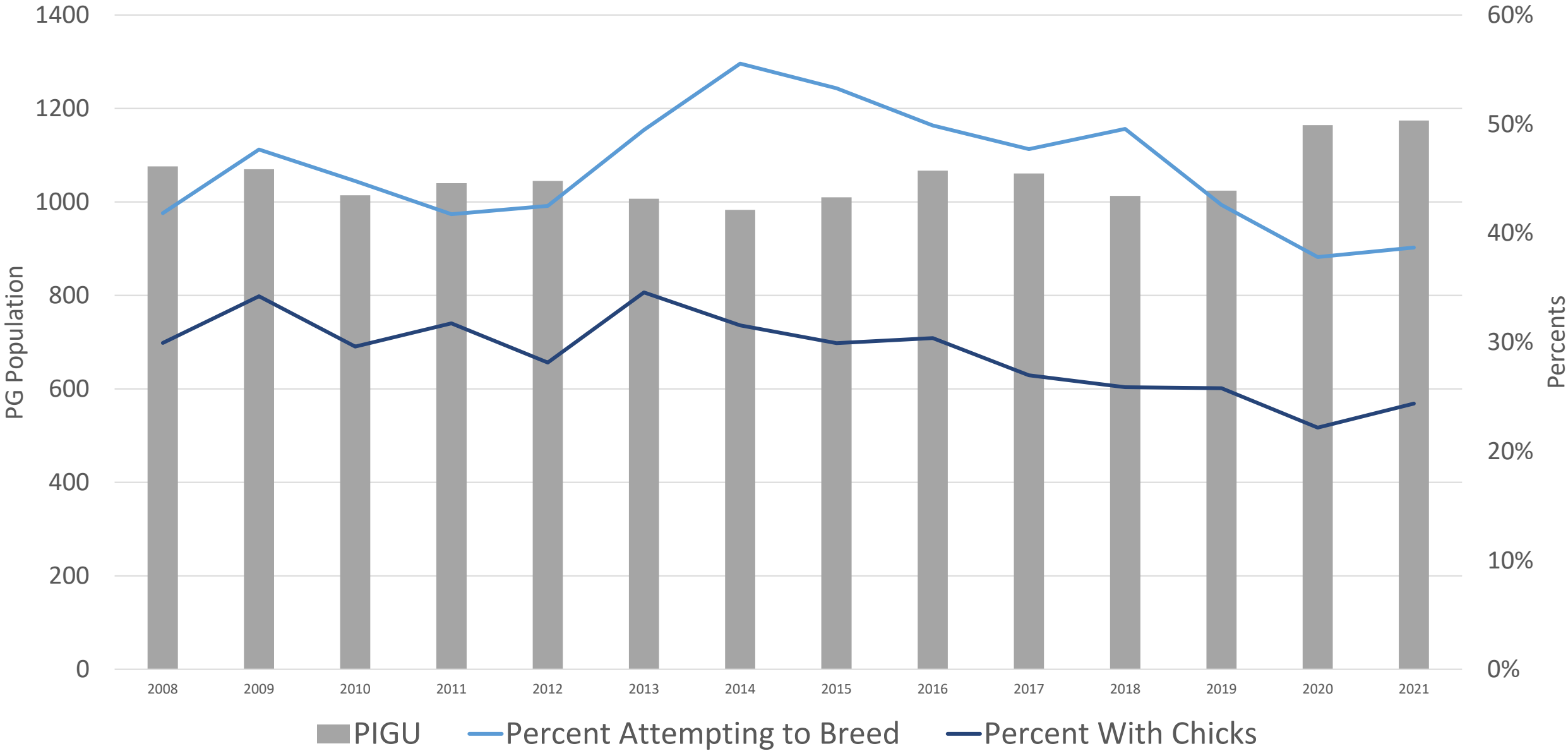
Number of Chick Burrows

Whidbey Island Survey 2008-2021



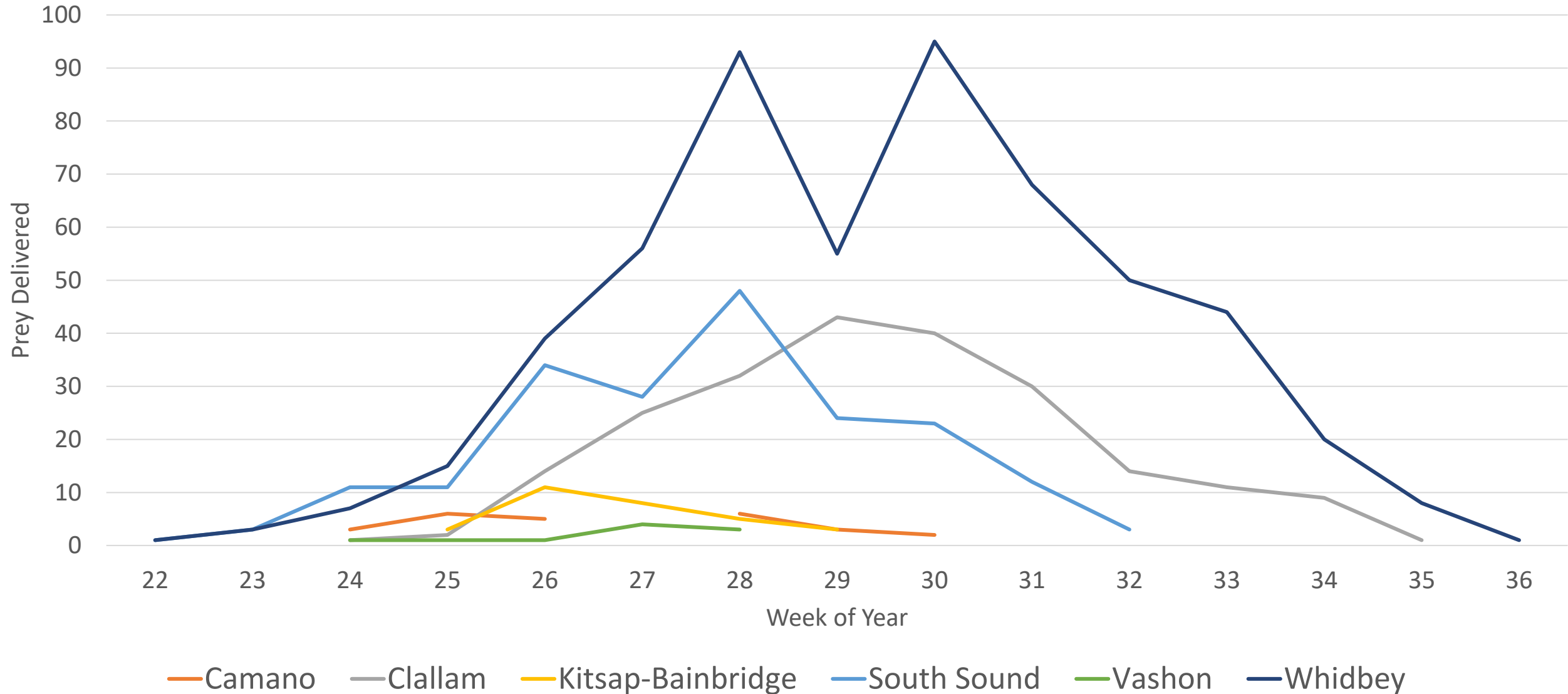
Total PGs and Breeding Percentages

Whidbey Island Study 2008-2021



Prey Deliveries per Week per Region - SSGN 2021

Week 23 is Jun 7-13
Week 33 is Aug 16-22



Distribution of Delivered Prey Types

SSGN 2021

