



# Rudy's Move to Coupeville Wharf

*Pictures and captions by Sandy Dubpernell, BW Class of 1993*

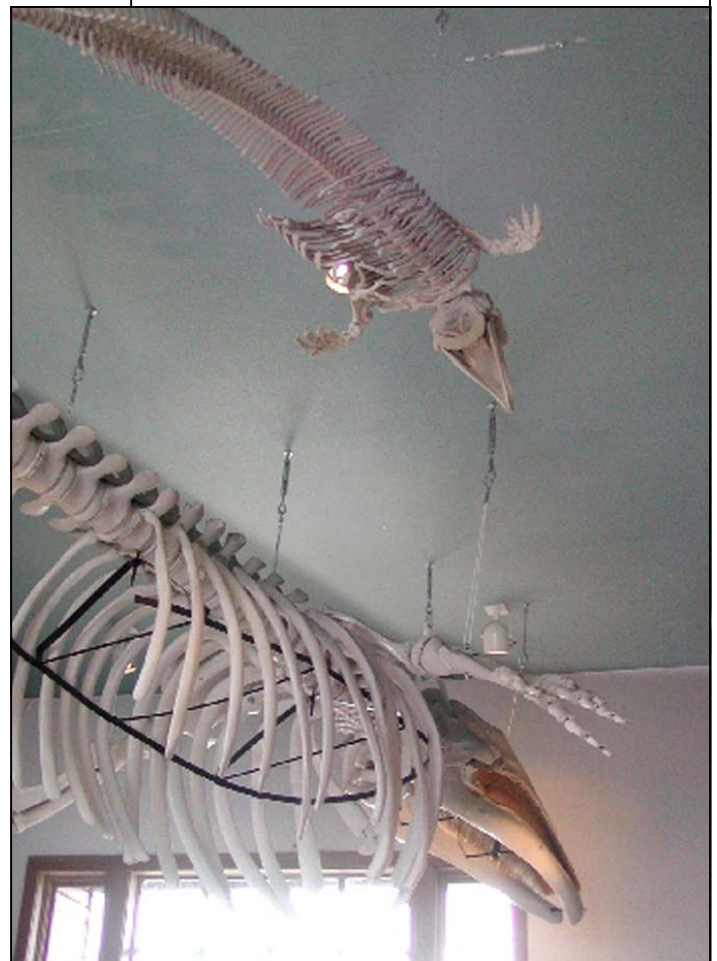
Rudy's skeleton was hung in the Coupeville Wharf Discovery Center on Friday morning, April 7, accompanied by Tahoma School classes and several Beach Watchers and local well-wishers



Jim Somers looks on as Fletcher Davis, Oz (leg only), Matt and Don rig the guide ropes from the ceiling bolts through the wire loops on the skele-



Matt (on left) instructs helpers Don Meehan and Oz Allen on how to remove Rudy safely from his cradle, while Harry Moore looks on.



Looking up at Rudy and Rosie.

*Many Beach Watchers and volunteers were involved in this project.*

*Your efforts are appreciated.*

*Come to the Coupeville Wharf. See Rudy and Rosie. And proudly think "I helped to make this happen!"*



Jim and Don steady the ladder while Oz and Matt (outside of photo to the left) raise the skeleton.

Fletcher stands precariously atop the ladder to replace the rope with steel wire attaching Rudy to the ceiling bolts.